

### Professional Series

### Key Features:

- ▶ 400 Watt power handling (average continuous pink noise) with high sensitivity provides high SPL capability.
- ▶ Consistent 100° x 100° broadband pattern control
- ▶ Extraordinary clarity cinema surround with extended frequency response for special effects
- ▶ Components:
  - 300 mm (12 in) woofer with Kevlar-reinforced cone and 75 mm (3 in) voice coil.
  - 25 mm (1 in) exit compression driver with unique patented design and high temperature polymer diaphragm.
- ▶ High-Power passive crossover network
- ▶ Overload protection

### Applications:

The SCS 12 is a coaxial-driver, 2-way, full-range cinema surround loudspeaker ideal for multi-channel surround formats and is designed for overhead installation as well as for standard on-wall installations.

The SCS 12 is comprised of a high-power coaxial 300 mm (12 in) low frequency driver and 25 mm (1 in) high frequency compression driver. The co-axial design utilizes a unique tapered pole-piece design and transitions to the cone of the low frequency driver as a large diameter pattern control horn for the high frequencies, both eliminating high-frequency beaming and extending pattern control to the lowest possible frequencies. The result is a coaxial speaker with wide, extremely consistent 100° coverage on a broadband basis.

Component features include a Kevlar-reinforced low-frequency cone for reliability, well-damped surround edge for smooth frequency response, high-temperature 75 mm (3 in) voice coil and a reduced distortion design through saturated-gap geometry. The high-frequency compression driver features a unique patented design, high-temperature polymer diaphragm, and fluid cooling for high output levels with low distortion.

The enclosure is constructed of thick ABS plus fiberglass and is heavily braced to maximize low-frequency performance.

A heavy-duty U-type mounting bracket is included.



### Specifications:

#### System:

Frequency Range (-10 dB):	55 Hz – 20 kHz
Frequency Response (±3 dB):	70 Hz – 20 kHz
Coverage Pattern <sup>1</sup> :	100° x 100°
Directivity Factor:	10.1 (1 k – 16 kHz)
Directivity Index (DI):	9.5 dB (1k – 16 kHz)
Long-Term System Power Rating (IEC) <sup>2</sup> :	400 W (1600 W peak), 2 hrs. 250 W (1000 W peak), 100 hrs
Sensitivity (2.83V @ 1m):	94 dB (Ave. 70 Hz – 20 kHz)
Maximum SPL:	122 dB (peaks of 128 dB) @ 1m
Crossover Network:	1.8 kHz, 3rd order (18 dB/oct) high-pass plus conjugate to HF, 2nd order low-pass to LF
Nominal Impedance:	8 ohms

#### Transducers:

Low Frequency Driver:	Kevlar-reinforced cone, 75 mm (3 in) voice coil.
High Frequency Driver:	25 mm (1 in) diaphragm and voice coil diameter, high temperature polymer diaphragm, patented design, fluid-cooling.
HF Driver Protection:	Minimum audibility SonicGuard™ HF overload protection

#### Physical:

Enclosure:	ABS with Glass enclosure, heavily braced
Attachment:	Two M10 points for included U-bracket. M6 secondary safety attachment point on back panel.
Grille:	Corrosion-resistant zinc-rich steel grille.
Dimensions:	402 x 402 x 445 mm (15.8 x 15.8 x 17.5 in), cabinet 470 mm (18.5 in) depth with gland nut 502 mm (19.75 in) including bracket extending to back
Colors:	Black
Net Weight:	14.0 kg (31.0 lb), 16.8 kg (37.0 lb) with U-Bracket
Shipping Weight:	19.5 kg (43.0 lb)
Included Accessories:	U-bracket, Steel

<sup>1</sup> Full-space (free-field)

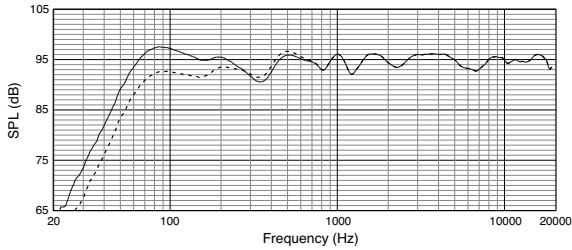
<sup>2</sup> Average 500 Hz to 10 kHz

<sup>3</sup> IEC standard, full bandwidth pink noise with 6 dB crest factor.

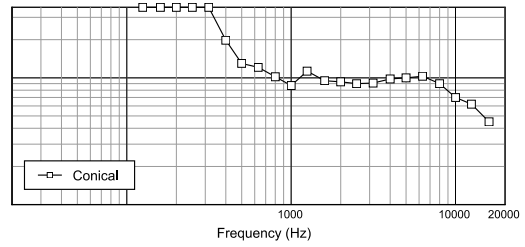
<sup>4</sup> Calculated based on power rating and measured full-space sensitivity.

# ► SCS12 Spatially Cued Surround, 2-Way Coaxial Loudspeaker with 12" LF

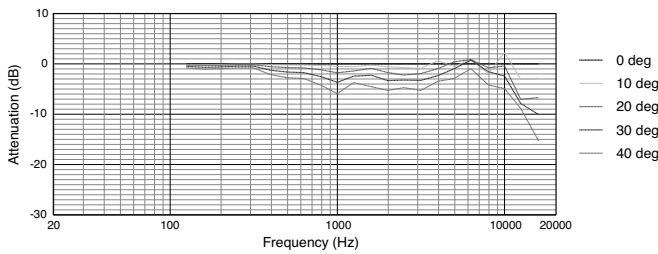
Frequency Response in half-space ( $2\pi$ , solid line) and full-space ( $4\pi$ , dotted line)



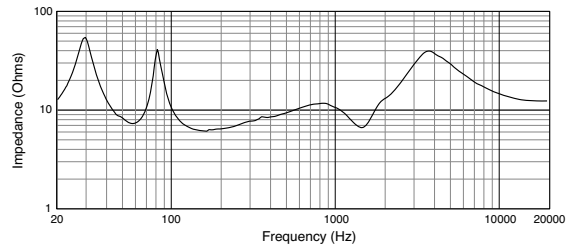
Beamwidth vs. Frequency



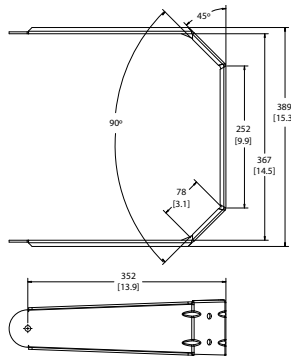
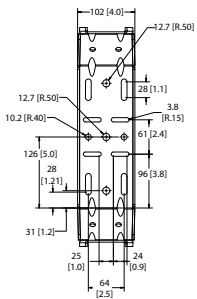
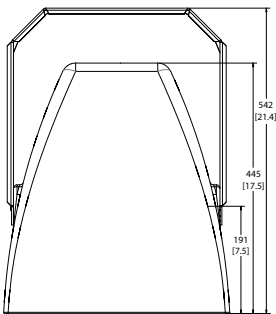
Off-Axis Frequency Response



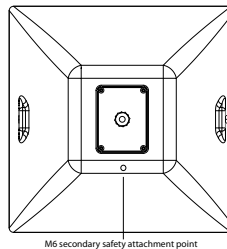
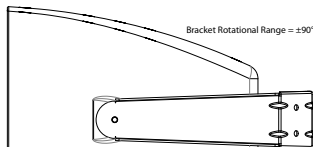
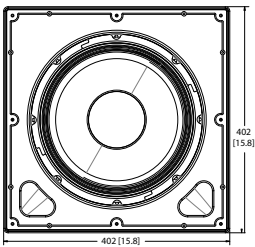
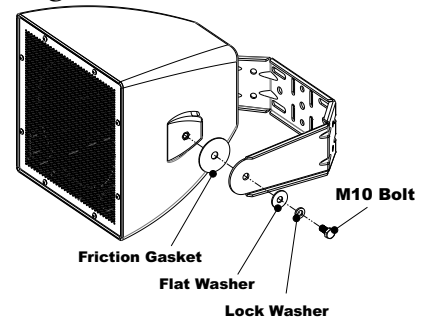
Impedance



## Dimensions



## Attaching U-Bracket to Cabinet



JBL Professional  
8500 Balboa Boulevard, P.O. Box 2200  
Northridge, California 91329 U.S.A.

© Copyright 2013 JBL Professional  
www.jblpro.com

SS SCS12  
CRP  
03/13